



Climate Change



Spring 2006

The West Sussex Sustainability Forum has an opportunity to make sure that the places where we work and the people we know, are all aware of the impact Climate Change will have on our daily lives. We need to be able to give, clear understandable information on the issues surrounding climate change and how this will affect them. Equally importantly, we also need to let people know what action, using the principles of Sustainable Development, they can take and make a difference. This information sheet sets out some of the facts about climate change and also examples of projects and initiatives that do this at a variety of scales from whole communities, businesses and faith communities to individuals.

WSSF Steering Group

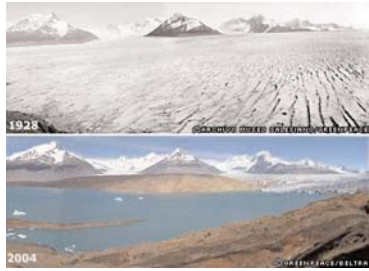


Image supplied courtesy of Greenpeace

EVIDENCE

- 0.6°C temperature increase
- 10% decrease in global snow cover
- 2% increase in global cloud cover
- Rise in sea levels
- Earlier Springs and Later Autumns



IMPACTS

As well a shift in average levels of temperature & rainfall, there will also be changes in:

- Soil moisture and humidity which will have an effect on crops and wildlife
- Cloud cover and the amount of solar energy reaching ground level will have effects on health as well as crops and livestock and building fabrics.
- Sea level along the South Coast is expected to rise by 19-79cm (about 7.5-31 inches) by the 2080s.
- Extreme events including storms, flooding, and droughts will be especially pronounced in areas like the South East. We expect that these will become more severe as well as more frequent. But they will be unpredictable; we could see “back-to-back” extreme events for periods of a few years, and then periods of relative calm for several years in between. Not every year will see record-breaking temperatures or headline-grabbing disasters.

MITIGATION / ADAPTATION

Climate Change will mean adapting the way we plan and manage infrastructure, business, our health, water resources and the natural environment.

To try and mitigate against the effects of Climate Change global and local targets have been set:

- Kyoto Protocol set a global target of a decrease in emissions of Green House Gases (GHGs) of 5.2% by 2012 based on emissions in 1990.
- The EU has committed to an 8% reduction in GHG emissions over the same period.
- The UK target under the Kyoto Protocol is 12.5%.
- The UK now has a domestic target of 20% decrease in CO2 emissions on 1990 levels by 2010, and an “aspirational” target of 60% by 2050.

Taken from a presentation by Tim Yair, Climate For Change Officer, Espace.

The 10% Challenge is an initiative led by West Sussex County Council to encourage people to reduce their effect on the environment. It aims to show that everyone can easily reduce their environmental impact by 10% by carrying out some very simple changes to the way they live their lives.

By pledging to use less energy, conserve water, and reduce waste we can all play our part. Most peoples' 10% can be achieved by just doing a few very simple things. The website provides calculators that can show the huge impact that small changes can make, and asks people to make pledges in these three key areas.

www.10percentchallenge.org.uk



WEST SUSSEX SUSTAINABILITY FORUM





ESPACE and the Manhood Peninsula

Taken from a presentation by Fran Wallington, ESPACE Project Officer

Members of the ESPACE partnership are delivering a range of actions that will feed into the development of policy guidelines and recommendations for adapting spatial planning to account for climate change. The work on the Manhood Peninsula is a 'case study', demonstrating the need to 'develop adaptation strategies through close liaison with the local community and relevant organisations to ensure sustainability, suitability and acceptance'.


Located in the southwest corner of West Sussex, the triangular peninsula is a low-lying area of land already suffering from coastal erosion, flooding, poor infrastructure, and supporting areas of environmental sensitivity as well as a climate-sensitive economy.

Launched on June 8th 2004 the 'Climate for Change' project aimed to:

- raise awareness, within the communities and decision-makers of the area, of the impact of climate change, the implications for land use and spatial planning, and the need to adapt and had two key objectives:
- to set out locally agreed action plans that enable positive local responses to climate change
- to provide a channel for influencing local planning and decision-making to account for effects of climate change

Through an extended 16-month process, including public workshops and focus groups, the innovative project brought together local people and decision-makers to recognise the impacts of climate change and the need for adaptation. Together they developed and refined a range of positive ideas for rising to the challenge of climate change locally, and have created a detailed action plan for achieving positive adaptation. The project has established management groups and is now beginning to deliver action on the ground.

For more information visit the website www.climatechange.org.uk



Making business sense of climate change

Is Your Organisation Prepared?

Taken from a presentation by Carl Peat of Clouds Environmental, on behalf of the Carbon Trust

The Carbon Trust was established by the Department for Trade and Industry to help companies, in all industry sectors, to improve their energy efficiency. They work with businesses and the public sector to help them reduce their carbon emissions and so minimise the long term effects of climate change. They have an excellent track record of helping companies, both large and small, in this vital area. In 2004 / 05 they spent around £7.3M giving support to organisations and saved around 1,691 kilo tonnes of carbon dioxide.

Their primary aim is to help businesses implement programmes that reduce carbon emissions through:

- Free energy saving advice tailored to your business, through publications, Helpline and expert Energy Surveys.
- Financial support – interest-free loans for SMEs and access to Enhanced Capital Allowances for energy saving investments.
- Our Carbon Management programme – considering wider carbon related issues such as emissions trading, renewable energy, and non-energy emissions.

To find out more about the Carbon Trust and order information packs visit their website:
www.carbontrust.co.uk



Operation Noah

Taken from a display provided by Ashley Ralston

Operation Noah is a project of the Environmental Issues Network of the Churches Together in Britain and Ireland.

The Campaign asks people to take 3 simple steps:

- 1. Sign the Climate Covenant**
The Covenant will be delivered to Government, and asks people to stating:
'World leaders must act to avert dangerous climate change, and give everyone fair access to energy in a sustainable world economy.
We ask the UK to lead negotiations.
We will take action personally to reduce greenhouse gas emissions.'
- 2. Take action yourself**
Cut your greenhouse gas emissions by switching to green electricity. Call one of these numbers and quote Operation Noah:
 - Good Energy on 0845 456 1640
 - Green Energy on 0845 456 9550
- 3. Spread the word**
Get your church and local community on board.

Visit the website for more information and further ideas:
www.christian-ecology.org.uk/noah

If this information is needed in an alternative format please contact us and we will try and meet your needs. Call 01243 777544 or email: WSSF@westsussex.gov.uk

Designed and published by WSSCC, Environment and Development
April 2006

www.westsussex.gov.uk